

**NORFOLK ISLAND**  
**WORLD WAR 2**  
**CIVILIAN CENSORSHIP MARKINGS AND ADHESIVES**  
**1939 – 1945**



*The Administration Buildings and site of the Post Office and Censorship Station at Kingston*

**FROM THE BEGINING OF WORLD WAR 2 ALL LETTERS PASSED THROUGH THE AUSTRALIAN CENSOR STATION AT KINGSTON. THESE HAD ONE OF THREE DIFFERENT HANDSTAMPS APPLIED, USUALLY IN VIOLET.**

**THE EARLIEST RECORDED DATE IS NOVEMBER 1939**

**ALL THREE HANDSTAMPS WERE USED CONCURRENTLY UNTIL AUGUST 1945**

CENSOR 1

Passed by  
Censor 1  
NORFOLK ISLAND

On His Majesty's Service.

Passed by  
Censor 1  
NORFOLK ISLAND



C.G.Savage, Esq.,  
Director of Fruit Culture,  
Department of Agriculture,  
Box 36A, G.P.O.,  
SYDNEY. N.S.W.

ADMINISTRATOR'S OFFICE,  
NORFOLK ISLAND.

Paquebot SYDNEY 2 JU 40 with scarce black Censor 1 Handstamp  
Thought to be the handstamp used by the Administration Censor, this is the scarcest of the three different markings



Registered Cover to Curacao 2 DE 44 with scarce black Censor 1 Handstamp.

Also U.S. Censor Handstamp

## CENSOR 1 Continued



Paquebot SYDNEY 27 JA 42 with normal violet Censor 1 Handstamp



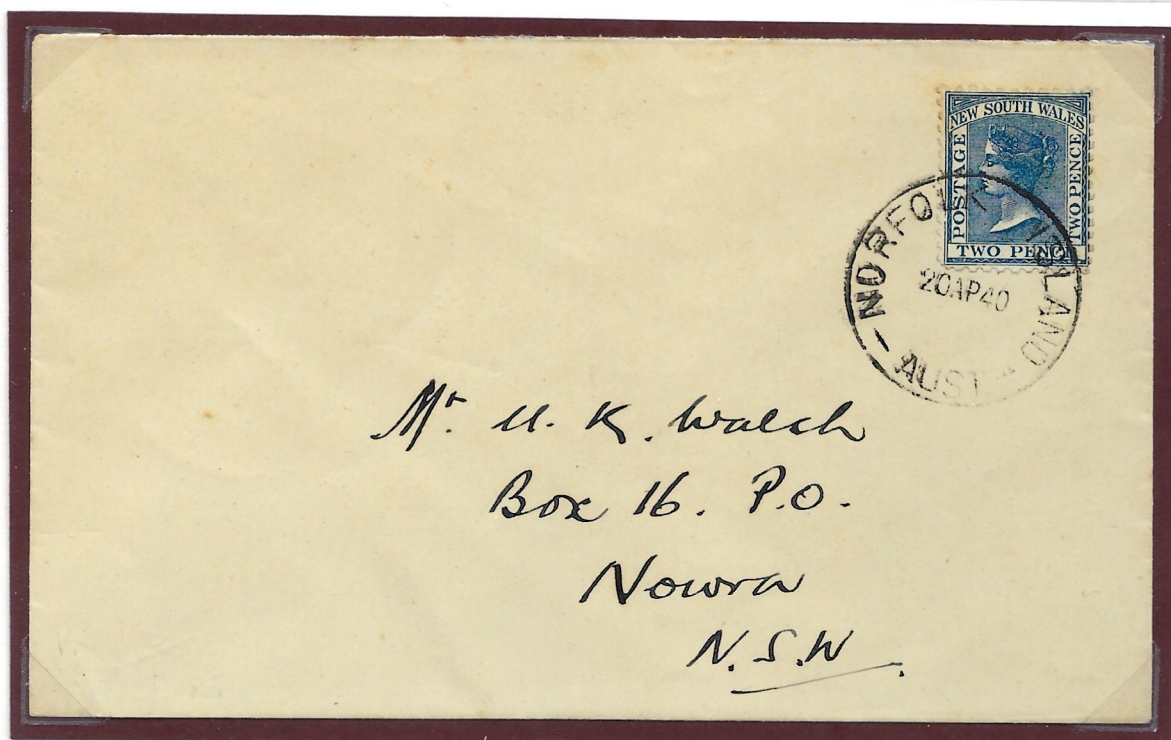
6 JU 44 with normal violet Censor 1 Handstamp

Note: the Australian Crest on the flap of this envelope helps to give credence to the use of this handstamp by the Administration

CENSOR 2

Shortage of stamps or Philatelic use?

Passed by  
Censor 2  
NORFOLK ISLAND



New South Wales 2d Blue 20 AP 40 correct postal rate. Censor stamp on back of envelope



New South Wales 3 values 20 AP 40 correct postal rate. Censor stamp on back of envelope

## CENSOR 2 Continued



1 1/2d Geo.V and 1/2d Roo. Correct postal rate. Censor stamp on back of envelope



4d Roo. Correct postal rate to USA 2 date stamps 12 and 31 OC 40

Passed by  
Censor 3  
NORFOLK ISLAND

CENSOR 3

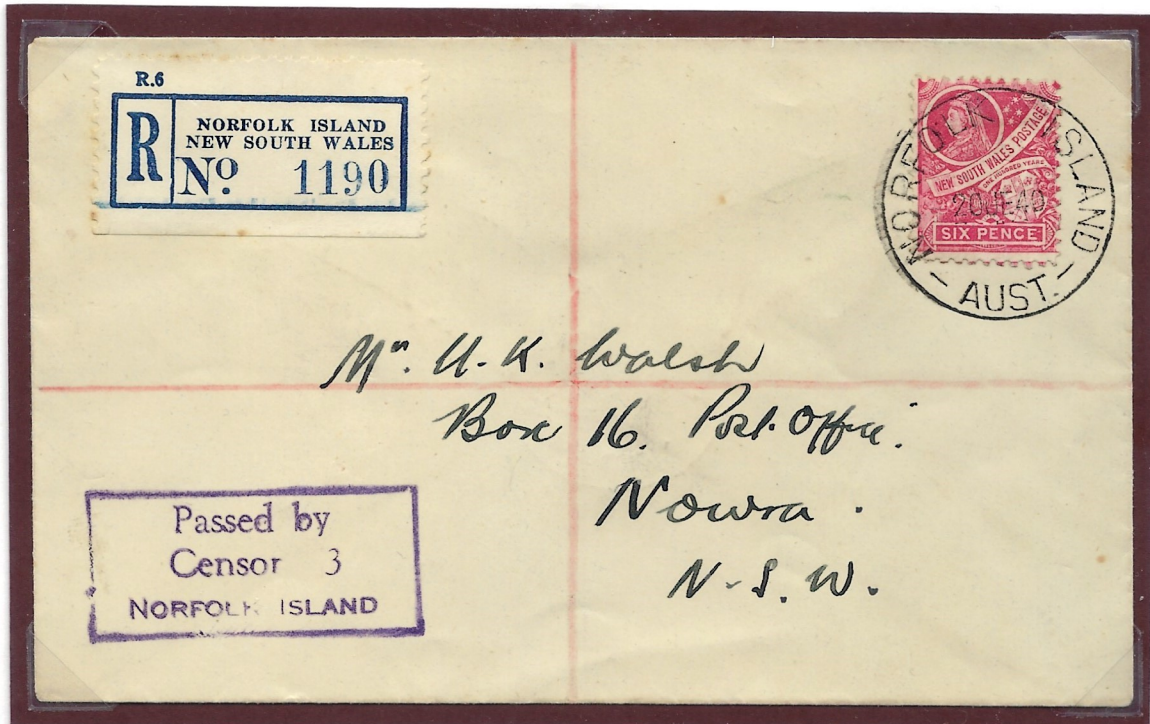


Early Censor 3 Cover, 15 DEC 1939, GVI 2d red

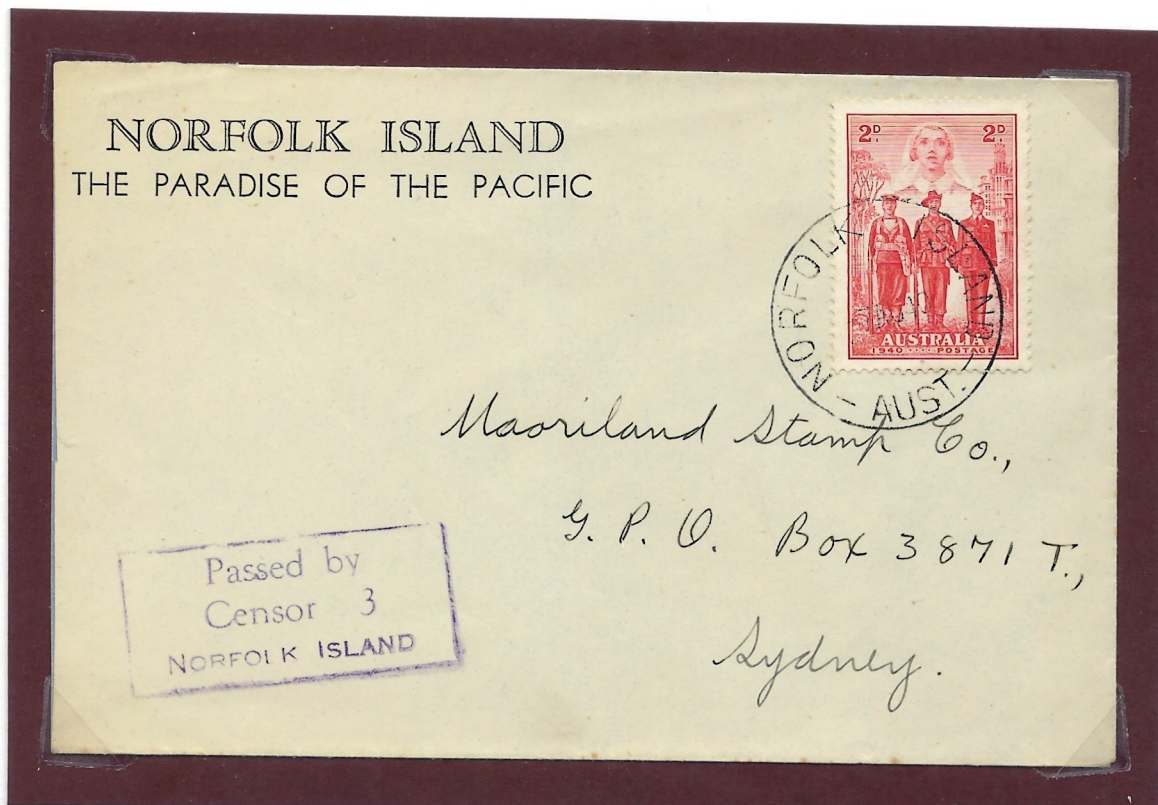


Censor 3 backstamp with 3 directional backstamps 2<sup>nd</sup>, 4<sup>th</sup> and 5<sup>th</sup> FEB 40

# CENSOR 3 Continued

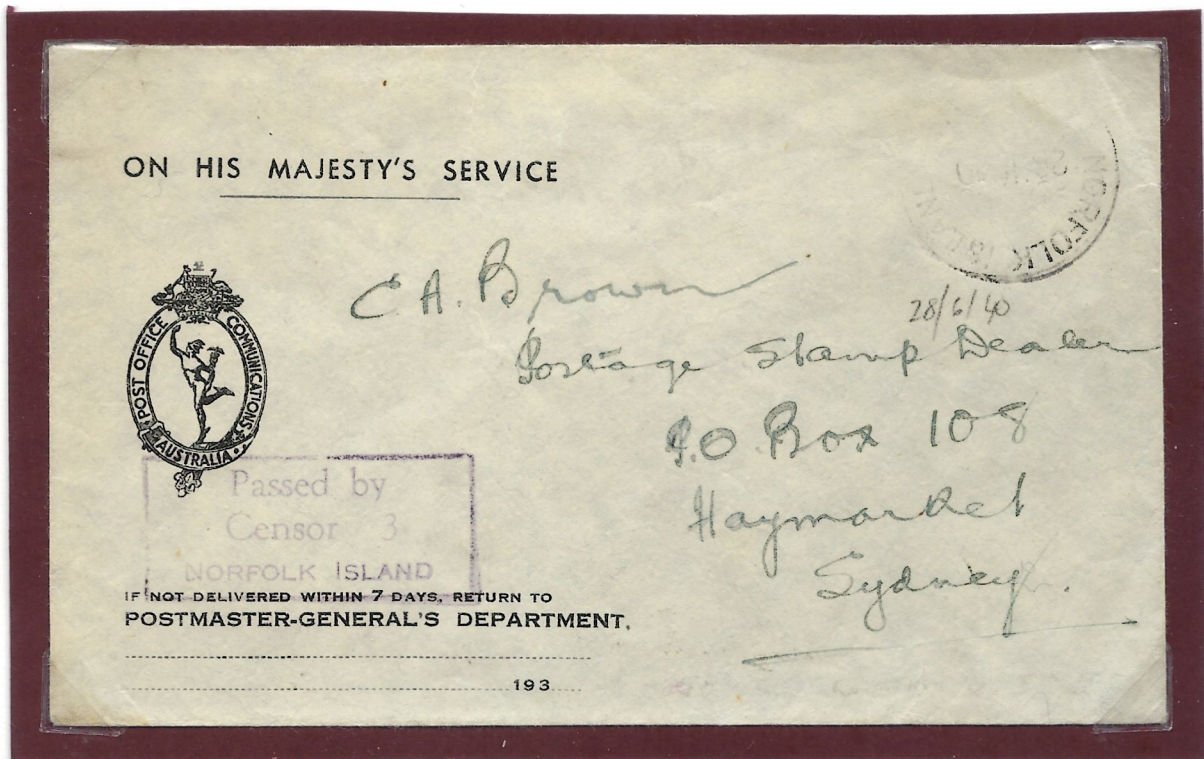


Registered Cover from Norfolk Island to NSW showing philatelic use of NSW 6d Red, correct postal rate  
Clear Censor 3 hand stamp and registration label. Back stamp Norfolk Island 20 JE 40 & GPO Sydney 2 JY 40



2d Red. Armed Services. Correct postal rate 7 AU 40

## CENSOR 3 Continued



A very poor strike of the NORFOLK ISLAND CDS – It appears that Official mail originating from the postal services did not require a stamp. This cover is a 1930's issue with the logo of the Australian Post Office Communications

