



The Envelope

Auckland Philatelic Society's Carrier for News, Views and Updates
Issue No 220 ISSN 0113 6100 – March 2025 Website: www.aps.gen.nz



Auckland Philatelic Society

Quarterly Newsletter of the Auckland Philatelic Society Inc. Editorial: jp.auckland@gmail.com

JAMES BERRY – DESIGNER EXTRAORDINAIRE

For any philatelist interested in New Zealand stamps the name James Berry will be familiar, but anyone digging a little deeper will find an extremely gifted and prolific talent. His ability to continually turn out award winning designs for stamps, coins, medals, books and even landscape paintings attest to his ability, passion and unrelenting work ethic.

Material for this article is courtesy of APS member Tim Beach whose collection of James Berry material is exceptional and, if you get an opportunity, not to be missed.

After leaving school at the tender age of 15, in 1921, James Berry's first job saw him working as a lowly clerk for the Eagle Star newspaper and later for the British Insurance Company.

Four years later, keen to start a new life, he was aboard the *SS Iconic* heading for Wellington as part of a NZ assisted Emigration scheme to bolster the colony's working population.

Allocated to Gisborne as a farm hand, he was soon working from 5.00am – 5.00pm, 7 days a week milking dairy cows. Having served his apprenticeship, he took on work as a labourer before the need for a better wage saw him taking employment as a freezing worker.

During his time in Gisborne, he continually sketched black and white landscapes, caricatures of cricket friends and notices for local social gatherings.

James Berry arrived back in Wellington and these sketches saw him introduced to Goldberg Advertising where he was soon employed as a commercial artist.

It was not until 1933 that Berry saw one of his stamp designs accepted.



Berry's "Pathway to Health" design

The success of his 1933 Health Stamp design was to prelude what one can only describe as a tsunami of James Berry stamps.

Tonga, Western Samoa and Aitutaki and you will find that, even without errors, and variants you have a substantial collection to exhibit.



*James Berry – Designer
20 June 1906 – 6 November 1979*

Add coins, medals, publications, book illustrations and bookplates and you have years of work ahead.



Berry's first stamp design for a 1930 stamp competition - he did not win.



Tim Beach sharing his Berry material.

For New Zealand alone there are 140 different stamps available to collectors including health, commemoratives, postage dues, life insurance and reprints and overprints.

Add in the Ross Dependency, Tokelau Islands, Bermuda, the Cook Islands, Niue



The famous 1949 Vanguard stamp – Only 7 copies are known to exist.

If you would like to read more about James Berry's life – look out for a copy of J.R Tye's excellent book **The Image Maker**

OUR NEW LOOK

We have been keen to “change it up” for a little while now just to prove that philately does not have to look boring!

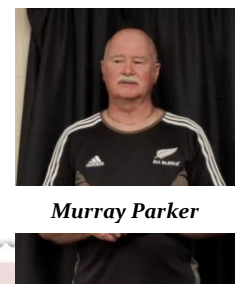
So we have changed the way we look both online and in print.

So if you like the new Newsletter format why not check out the new APS website at

www.aps.gen.nz

HISTORIC HUTS OF ROSS DEPENDENCY

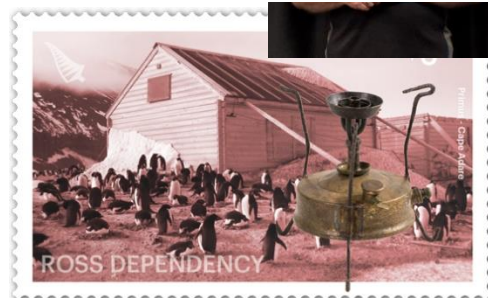
In March, APS was privileged to have a presentation from Murray Parker who, without notes, demonstrated his encyclopaedical knowledge of Antarctica. The following is a brief synopsis of his presentation.



Murray Parker

The Ross Dependency was named after James Clark Ross, who discovered the Ross Sea.

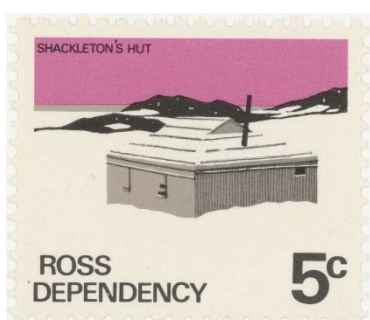
There are four historic huts in the Ross Dependency, all of which have been shown on stamps. Apart from the first hut, they are named after the ships that carried the explorers to Antarctica.



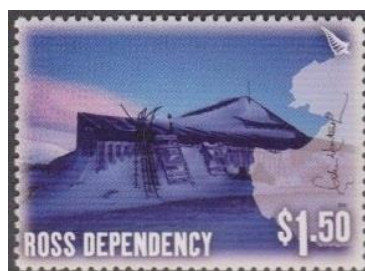
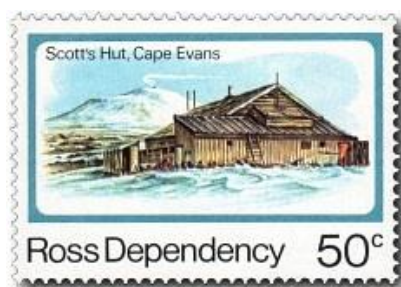
Borchgrevink's Hut, which was built in 1898 at Cape Adare by Carsten Borchgrevink's expedition, is the first structure in Antarctica. The hut is depicted on the \$3.30 stamp issued in 2019.

The second is that at Winter Quarters Bay on Ross Island was built as a storage hut by Robert Falcon Scott in 1901. The Discovery Hut appears on the \$2.00 2002 and \$1.00 2017 stamps.

The third hut is at Cape Royds on Ross Island and was built by Ernest Shackleton in 1907. This is known as the Nimrod Hut and has featured on three stamp issues: the 5c stamp of 1972 and the \$1.00 of 2008 and the \$2.20 of 2017.



The fourth hut is at Cape Evans on Ross Island and was built by Scott's second Terra Nova Expedition in 1910. This hut featured on the 50-cent stamp issued in 1982, the \$1.50 stamp released in 2005, and the \$2.70 stamp from 2017.



Overprinted NZ stamps Issued for Expeditions

1907 Shackleton: on this expedition the 1d Universal overprint “Edward VII Land” was issued.

1910 Scott: on this expedition the 1d Universal overprint “Victoria Land” and later, because of increased postage, the 1/2d Edward V were issued.



Recent NZ Post Issues



The British Empire Games 1950

Issued 5th February 2025.

Four gummed stamps, and a miniature sheet. 20 stamps per sheet, perf 14.00 x 14.40. The 75th anniversary of the Empire / Commonwealth Games held in Auckland. Twelve countries participated in 11 sports with 590 athletes. New Zealand won 10 gold, 22 silver and 22 bronze medals to place third on the medal table behind Australia and England.



Animals in Service

Issued 5th March 2025.

Four gummed stamps, and a miniature sheet. 20 stamps per sheet, perf 14.00 x 14.40. These stamps are in memory and honour of the animals who have served alongside soldiers in war and peace. The stamps depict Major the dog who was the mascot of 2 NZEF, 19th Battalion, military messenger pigeons, horses used by the New Zealand Expeditionary Force in Egypt during WW1 and mules and donkeys used in WW2 to transport ammunition, stores and water to the forward troops in isolated positions in the Tunisian hills.



Royalpex 2025 National Stamp Exhibition.

Issued 7th March 2025.

A miniature sheet with two stamps from the pollinator series, perf 14.00 x 14.167. This stamp exhibition was organised by the Royal Philatelic Society of New Zealand and run by the New Zealand Philatelic Federation in Palmerston North, between the 7th to 9th March.



Pasifika.

Issued 2nd April 2025.

Four gummed stamps, a miniature sheet and a block of 4 se-tenant. 20 stamps per sheet, perf 14.47 x 14.286. The Pasifika Festival held annually at Western Springs, Auckland, celebrates eleven Pacific nations with ethnic food, dancing and crafts. The stamps depict the vibrancy of the Pacific cultures.

Stamp Collecting is still a Vibrant Hobby

Media has declared stamp collecting to be dead, yet there are 8.5 million listings of stamps on eBay, and numerous auction houses who do millions of dollars in business each year. Dead? Maybe not!

Auckland Philatelic Society RED DOT SALES

Auction off your unwanted stamps. Put together no reserve box lots, or collections valued at greater than \$20. Auctions open to the public.

Next Auction: Saturday 10th May 2025

Commission:

Non-members 20%

Members 15%,

Fellow Societies & Charities 10%

Email: Brucewebberqa@netscape.net

"The bells Igor, the bells"

Late February, APS was treated to a very appealing presentation by one of its most popular members.

Jo Burgess has previously entertained the membership with a variety of her eclectic collections but her presentation about bells will be a standout from our 2025 speakers list.

Bells have been used throughout history to herald great, bad and sad events.

However, this is the first time we have seen them highlighted in a philatelic presentation.

Jo started her presentation with a video of the



Jo Burgess

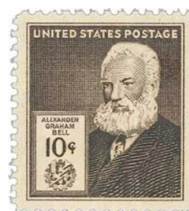
Memorial Campanile Carillon and gave us details of 5 of the 74 bells in the Memorial, which is the 3rd largest in the world.

It was featured on the 1946 NZ Peace stamp. Details of all 74 bells can be found at the following website address



<https://nzhistory.govt.nz/war/bells-of-remembrance>

From here the talk took the liberty (one of USA's liberty bell stamps) of presenting loosely bell-related stamps, including "Belfries of Belgium" health stamps, Alexander Graham Bell, a David Bellamy First Day Cover, Belteshazzar, Rowland Hill's death, a bell-hop



boy, bell-bottom clothing, Albrecht Durer's beldam, Disney's Beast Belle and Cinderella (the belle of the ball), our bellbird

health stamp, belladonna flowers, a Belfast 1890 Circular Date Stamp,



Belfast

ship

letter, Belfast railway stamp

and Belfast spoon

cancellation.

The topic rang a few bells for some of those present



reminding them of primary school days near the Wellington carillon, school camps with bells ringing through the night, Banbury Cross statue's bells, a tour through Big Ben's clock tower, a ship's propeller foundry and of other carillons in NZ.



As always, a very entertaining and engrossing presentation.



APS Pacific Award 1 Page Competition

Get your 1-page entries together for this year's Pacific Award Competition. Any topic, any style, typed, handwritten, white or coloured paper, 1 stamp or 21 – the choice is entirely yours.

Judged by the audience, you can enter at either of these meetings

Sun 18 May – Ferndale House – 1.30pm

Tues 20 May – Senior Citizens' Hall – 7.30pm

CONGRATULATIONS!

Two APS members did extremely well at **Royalpex25**

Francesca Giraldo won the Novice Prize adding to her already growing list of prizes and accolades. A well-deserved recognition for a relatively new philatelist.

Tony Schluter – an APS member from Kaitaia – who unfortunately passed away on 13 December 2024 but had already entered Royalpex won Gold. While he didn't enter under APS he was a current APS member last year.

Our sincere congratulations to both.



APEX2025 – THE APS STAMPS & HOBBIES EXHIBITION OF THE YEAR

20 & 21 September - King's College, Otahuhu, Auckland
10.00am – 4.00pm – Public entry and parking free

After the success of last year's APS Stamps and Hobbies Exhibition, and with consideration to the possibility of applying for a National Exhibition in 2026, the APS Committee decided to test our ability to hold a publicly popular event at a venue that was not only affordable but offered us all the facilities needed for a potential 2026 Exhibition. And you are invited! To encourage as much public interest (and interest from potential philatelists) as we can, we are enrolling other hobbies to participate (potentially for free) in the event. We already have the Numismatic Society with an exhibition and sales stands, the Genealogy Society, a two-day Warhammer tournament, model planes, tanks and cars importers and we are still looking for more to make the event as interesting to the wider public as we can. But there is still an extremely big philatelic component – after all, that's why the event is happening!

INTERCLUB 2025

Here's a challenge for Clubs!

As current holders of the Interclub trophy we are keen to keep it in our trophy cabinet! But apparently the rules say we have to give your Club a chance to take it off us.



It's a relatively simple competition – five single frames is all you need.

No one member can enter more than 2 frames and to give you the best chance to uplift the trophy there are 12 categories you can choose to enter in (but no more than 2 entries in any of the categories you select!).

Entries will be judged live at the Exhibition on the Saturday and winners announced at 3.00pm on the Sunday.

As an incentive we have a brand new 32 side Lighthouse stockbook (courtesy of Kiwi Stamps) for every competing member of the winning club. (Not that we expect they will leave APS ownership – but we'd be happy to hand them over if you turn out to be good enough).

Appreciating that some smaller clubs will find it difficult to pull together five frames from the required number of entrants we are happy for two or more clubs to enter a combined entry.

We have already sent out details to clubs but you can also find them on our website at aps.gen.nz

Think you might be up for it???

APS ANNUAL EXHIBITION 2025

Here's a challenge just for you!

This year we have combined our own Annual Exhibition with the Interclub competition.

It's a single frame competition with 5 available categories covering the philatelic collecting spectrum so there's no excuse not to enter.

All entries will receive a judge's sheet, Certificates. the top 3 in each category certificates, a new 32 side Lighthouse stockbook (courtesy of Kiwi Stamps) for the winner of each category and a 64 side Lighthouse stock book for the winner of the Public Choice competition.



Judging has been simplified (we are allowed to do that) so we are hoping for more positive feedback from and for exhibitors. Information is being sent to clubs this week and will also be published on our website

www.aps.gen.nz

So get cracking – you've been given 6 months' notice so there aren't really any excuses for not entering.

So pull out your diary and mark in 20 & 21 September to visit the Exhibition – time it right and you might even be able to watch the judges mark your exhibit on the Saturday.

Alternatively you could check out your family bloodlines or become a Warhammer warrior!

HERE'S \$5 FOR YOU

Subscriptions for the year 2025/26 are almost due. And an Early Payment Discount of \$5 is available for subscriptions paid before **31 May 2025**.

Subscription Options

- *Adult Members \$45 - including Partner \$50
- *Country Members \$35 - including Partner \$40
- *Junior Members (under 18 at 1 Jan 25) - Free

Newsletters are sent via email. But for those who would prefer a paper version via mail – please add \$10 to your subscription cost.

All payments to **Auckland Philatelic Society** (APS) can be either in cash or card at a Club night, or by internet banking.

APS Subscription Account:

ANZ Bank 01-0102-0063264-00

For subscription payments. Please put your name in "Particulars" (i.e. "J Blogs") and in "Reference" put the year your subscriptions relate to (i.e. 24/25). When paid please also email Andrew Chessum (aucklandphilatelic@gmail.com) with your name and payment details.

Other APS Payment Details to Note

The Exchange Circuit Account

ANZ Bank 01-0102-0063264-00

From 1 April for all Circuit Book payments. **Important** When paying for your Circuit Book purchases please put your name in "Particulars" (i.e. "J Blogs") and the Circuit Book numbers you are paying for as the "Reference" (i.e. "Books 10, 12"). To successfully credit your account, we need these details. Please email Nic Hendy (nichen@hotmail.com) with confirmation.

The Red Dot Auctions Account:

ANZ Bank 01-0102-0063264-00

For Red Dot Auction payments. Please put your name in "Particulars" and "Red Dot" in "Reference". When paid please email Bruce Webber (brucewebberqa@netscape.net) with your name and payment details.

Important: Online Payments to APS

To reduce scams and banking fraud, New Zealand banks now require customers who use their online banking system to correctly identify the name of the account into which a payment is being made.

Payments to Auckland Philatelic Society for subs, Red Dot auctions, etc. will in future require you to use the following payee name: **Auckland Philatelic Society**

This will enable the bank to check for an account match and confirm this with you before you decide to proceed, amend or cancel the payment depending on the result returned

ONE FINAL COMMENT

We read so often in our hobby that philately or stamp collecting is dead and with countries such as Denmark, who this month joined a growing list of countries advising that they were no longer going to issue stamps, it is not hard to see how one could get that impression.

But before you throw your collection away, we would like to share with you an item we wrote and included in our newly designed website.

We hope it gives you pause for thought.

You are an archivist, curator, historian and much, much more!

As a stamp collector you are charged with discovering, collecting, protecting, and preserving history. People used these little pieces of paper to communicate, transfer money and valuables, provide good or sad news, buy, and sell, introduce, welcome, and much, much more. They were carried by hand, horse, carriage, ship, plane, hot-air balloon, bike, and train. They were lovingly designed, printed, had unique watermarks and papers, were perforated, gummed and were as valuable as the local currency depending on their country of origin. They identified a country, were cancelled with a date stamp or similar that indicated date and time and their starting location. Each little stamp is one of a limited number that was produced and many of their original number have already disappeared. Thankfully, some survive because of people like you who are prepared to save them, discover their origins and history and curate them for future generations - being a philatelist carries with it its own responsibilities!



If you would like to drop us a line. Have a question or comment on anything in this issue of The Envelope simply send an email to aucklandphilatelic@gmail.com We will do our best to reply as quickly as possible

Material in this Newsletter may be reproduced without permission provided that:

- (a) The item does not already carry a specific copyright notice.
- (b) An item is reproduced in its entirety or is stated as being abridged.
- (c) An acknowledgement must be given to this publication and the Auckland Philatelic Society.
- (d) Opinions expressed are not necessarily those of APS.